

## Crash and Injuries by Month

Month	Crashes				Persons	
	Total	Fatal	Injury	Property Damage Only	Fatality	Injury
January	368	0	64	304	0	89
February	463	0	84	379	0	107
March	245	2	63	180	2	100
April	270	1	66	203	1	106
May	325	2	86	237	2	119
June	323	2	70	251	2	90
July	334	0	75	259	0	102
August	323	3	80	240	4	129
September	353	3	79	271	3	101
October	425	2	70	353	2	104
November	348	0	47	301	0	65
December	532	0	95	437	0	120
<b>TOTAL</b>	<b>4,309</b>	<b>15</b>	<b>879</b>	<b>3,415</b>	<b>16</b>	<b>1,232</b>

In Muskegon County in 2010 there were:  
**4,309** crashes

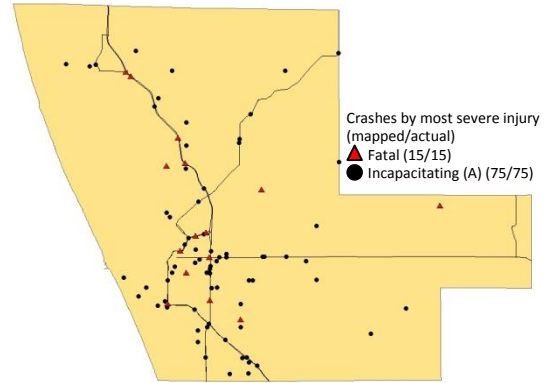
**Involving:**

**8,568** people

**8,493** motor vehicle drivers and passengers

**36** bicyclists

**39** pedestrians



## Driver Statistics

Age Group	Population	Licensed Drivers	Drivers in Crashes	Drivers in Crashes	
				Per 10K Population	Per 10K Licensed
0 - 15	37,523	747	15	4.0	200.8
16 - 20	12,505	8,793	1,047	837.3	1,190.7
21 - 64	98,808	89,928	4,872	493.1	541.8
65 +	23,352	20,661	692	296.3	334.9
Other/Unknown	--	--	493	--	--
<b>TOTAL</b>	<b>172,188</b>	<b>120,129</b>	<b>7,119</b>	<b>413.4</b>	<b>592.6</b>

## Muskegon County Experience

Muskegon County experienced the highest number of fatal crashes (3) in August and September, and the highest number of persons killed (4) in August.

Muskegon County driver statistics indicate 7.3 percent of licensed drivers were age 16-20, and 14.7 percent of drivers in that age group were involved in crashes.

In Muskegon County, motorcycles accounted for only 1.4 percent of the total vehicles in crashes, but they were involved in 20.0 percent of the total fatal crashes.



## Vehicles in Crashes

Vehicle Type	Motor Vehicles		Fatal Crash		Injury Crash	PDO Crash
	Number of Vehicles	% of Total	Number	% of Total		
Passenger car & station wagon	5,483	77.0	13	65.0	1,143	4,327
Van, motorhome	250	3.5	0	0.0	53	197
Pickup truck	815	11.4	1	5.0	140	674
Small truck under 10,000 lbs. GVWR	152	2.1	0	0.0	40	112
Cycle	98	1.4	4	20.0	76	18
Moped	16	0.2	1	5.0	13	2
Go Cart	2	0.0	0	0.0	0	2
Snowmobile	1	0.0	0	0.0	0	1
Off-Road Vehicle (ORV) / All-Terrain Vehicle (ATV)	0	0.0	0	0.0	0	0
Other	95	1.3	0	0.0	21	74
Truck/bus over 10,000 lbs.	95	1.3	1	5.0	8	86
Unknown	112	1.6	0	0.0	13	99
<b>TOTAL</b>	<b>7,119</b>	<b>100.0</b>	<b>20</b>	<b>100.0</b>	<b>1,507</b>	<b>5,592</b>

**Blood alcohol concentration (BAC) results among all vehicle drivers in alcohol-related crashes by age**

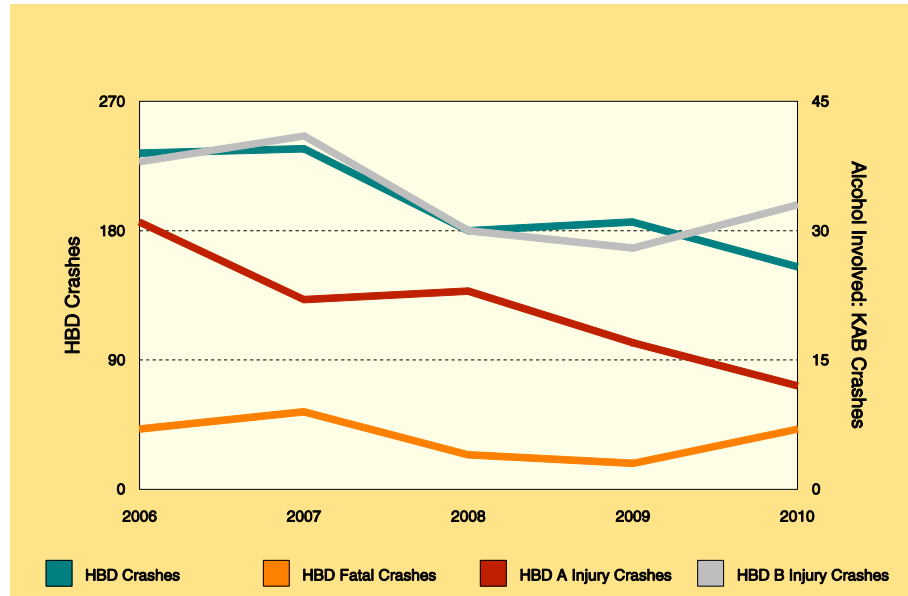
Age group	Total drivers in alcohol-related crashes	Total drivers coded drinking	Total drivers tested	Total driver coded drinking, tested	BAC = 0.00	BAC 0.01 g/dL to 0.07 g/dL	BAC 0.08 g/dL to 0.016 g/dL	BAC 0.17 g/dL and above	BAC not reported
0 - 15	0	0	0	0	0	0	0	0	0
16 - 20	16	8	10	7	0	1	1	2	4
21 - 64	168	137	155	123	2	13	31	34	57
65 +	13	9	14	9	0	0	2	3	4
Other/Unknown	16	1	0	0	0	0	0	0	1
<b>TOTAL</b>	<b>213</b>	<b>155</b>	<b>179</b>	<b>139</b>	<b>2</b>	<b>14</b>	<b>34</b>	<b>39</b>	<b>66</b>

Notes:

BAC measured in grams (g) per deciliter (dL)

BAC may not be reported if drivers are not tested, or if the results are not available immediately (as in the case of a blood test)

**Crashes Involving Alcohol**



MUSKEGON	All Crashes	HBD Crashes	% HBD	All Fatal Crashes	HBD Fatal Crashes	% HBD	Total A Injury	HBD A Injury	% HBD	Total B Injury	HBD B Injury	% HBD
2006	5,011	234	4.7	20	7	35.0	122	31	25.4	276	38	13.8
2007	5,116	237	4.6	23	9	39.1	118	22	18.6	329	41	12.5
2008	5,192	180	3.5	16	4	25.0	111	23	20.7	277	30	10.8
2009	4,481	186	4.2	14	3	21.4	102	17	16.7	308	28	9.1
2010	4,309	155	3.6	15	7	46.7	75	12	16.0	282	33	11.7

**Restraint use among reported vehicle occupants by vehicle type**

Vehicle Type	Total Reported Occupants			Fatalities			Incapacitating			Non-incapacitating			Possible Injury			No Injury		
	Total	Using Restraint	%	Total	Using Restraint	%	Total	Using Restraint	%	Total	Using Restraint	%	Total	Using Restraint	%	Total	Using Restraint	%
Passenger car & station wagon	5,781	5,197	89.9	9	5	55.6	56	33	58.9	240	204	85.0	612	565	92.3	4,613	4,386	95.1
Van, motorhome	271	254	93.7	0	0	0.0	1	1	100.0	15	13	86.7	31	26	83.9	220	214	97.3
Pickup truck	837	770	92.0	0	0	0.0	2	1	50.0	20	18	90.0	51	48	94.1	737	703	95.4
Small truck under 10,000 lbs. GVWR	160	151	94.4	0	0	0.0	5	3	60.0	7	7	100.0	15	15	100.0	130	126	96.9
Cycle	114	108	94.7	4	4	100.0	17	15	88.2	41	40	97.6	28	27	96.4	23	22	95.7
Moped	17	9	52.9	1	0	0.0	1	1	100.0	12	7	58.3	0	0	0.0	3	1	33.3
Go Cart	2	0	0.0	0	0	0.0	0	0	0.0	0	0	0.0	0	0	0.0	2	0	0.0
Snowmobile	1	1	100.0	0	0	0.0	0	0	0.0	0	0	0.0	0	0	0.0	1	1	100.0
Off-Road Vehicle (ORV) /All-Terrain Vehicle (ATV)	0	0	0.0	0	0	0.0	0	0	0.0	0	0	0.0	0	0	0.0	0	0	0.0
Other	101	87	86.1	0	0	0.0	3	2	66.7	6	5	83.3	10	6	60.0	80	74	92.5
Truck/bus over 10,000 lbs.	98	79	80.6	0	0	0.0	0	0	0.0	2	2	100.0	2	0	0.0	86	77	89.5
Uncoded & errors	112	11	9.8	0	0	0.0	0	0	0.0	0	0	0.0	0	0	0.0	16	4	25.0
<b>TOTAL</b>	<b>7,494</b>	<b>6,667</b>	<b>89.0</b>	<b>14</b>	<b>9</b>	<b>64.3</b>	<b>85</b>	<b>56</b>	<b>65.9</b>	<b>343</b>	<b>296</b>	<b>86.3</b>	<b>749</b>	<b>687</b>	<b>91.7</b>	<b>5,911</b>	<b>5,608</b>	<b>94.9</b>

**Restraint use among reported vehicle occupants by age**

Age Group	Total Reported Occupants			Fatalities			Incapacitating			Non-incapacitating			Possible Injury			No Injury		
	Total	Using Restraint	%	Total	Using Restraint	%	Total	Using Restraint	%	Total	Using Restraint	%	Total	Using Restraint	%	Total	Using Restraint	%
0 - 15	116	97	83.6	0	0	0.0	9	4	44.4	34	25	73.5	62	59	95.2	11	9	81.8
16 - 20	1,124	1,060	94.3	1	0	0.0	13	6	46.2	51	41	80.4	142	127	89.4	917	886	96.6
21 - 64	5,057	4,796	94.8	11	7	63.6	54	38	70.4	232	206	88.8	484	443	91.5	4,276	4,102	95.9
65 +	704	680	96.6	2	2	100.0	9	8	88.9	26	24	92.3	60	58	96.7	607	588	96.9
Other/Unknown	493	34	6.9	0	0	0.0	0	0	0.0	0	0	0.0	1	0	0.0	100	23	23.0
<b>TOTAL</b>	<b>7,494</b>	<b>6,667</b>	<b>89.0</b>	<b>14</b>	<b>9</b>	<b>64.3</b>	<b>85</b>	<b>56</b>	<b>65.9</b>	<b>343</b>	<b>296</b>	<b>86.3</b>	<b>749</b>	<b>687</b>	<b>91.7</b>	<b>5,911</b>	<b>5,608</b>	<b>94.9</b>

## Muskegon County continued

**Blood alcohol concentration (BAC) results among all vehicle drivers  
in alcohol-related crashes by municipality**

Municipality	Total drivers in alcohol- related crashes	Total drivers coded drinking	Total drivers tested	Total drivers coded drinking, tested	BAC = 0.00	BAC 0.01 g/dL to 0.07 g/dL	BAC 0.08 g/dL to 0.016 g/dL	BAC 0.17 g/dL and above	BAC not reported
Blue Lake Twp.	1	1	1	1	0	0	0	0	1
Casnovia	0	0	0	0	0	0	0	0	0
Casnovia Twp.	4	3	2	2	0	0	0	0	3
Cedar Creek Twp.	8	7	8	7	0	1	3	1	2
Dalton Twp.	19	15	14	13	0	0	1	3	11
Eggleston Twp.	9	6	8	6	0	0	0	3	3
Fruitland Twp.	8	6	5	4	0	0	2	0	4
Fruitport	4	3	3	3	0	1	1	1	0
Fruitport Twp.	26	19	21	17	0	2	5	7	5
Holton Twp.	7	6	6	5	0	1	0	1	4
Laketon Twp.	2	2	2	1	0	0	0	1	1
Lakewood Club	0	0	1	0	0	0	0	0	0
Montague	0	0	0	0	0	0	0	0	0
Montague Twp.	3	2	2	2	0	0	1	1	0
Moorland Twp.	2	2	3	2	0	0	1	0	1
Muskegon	51	33	43	29	1	3	10	7	12
Muskegon Heights	8	4	6	4	0	1	2	0	1
Muskegon Twp.	22	16	18	14	0	0	1	7	8
North Muskegon	3	1	1	1	0	0	0	1	0
Norton Shores	17	13	19	13	1	1	5	4	2
Ravenna	1	1	1	1	0	0	0	1	0
Ravenna Twp.	5	5	4	4	0	1	0	0	4
Roosevelt Park	0	0	0	0	0	0	0	0	0
Sullivan Twp.	3	3	4	3	0	0	0	1	2
White River Twp	0	0	0	0	0	0	0	0	0
Whitehall	0	0	0	0	0	0	0	0	0
Whitehall Twp.	10	7	7	7	0	3	2	0	2
Unknown Community	0	0	0	0	0	0	0	0	0
<b>Muskegon County TOTAL</b>	<b>213</b>	<b>155</b>	<b>179</b>	<b>139</b>	<b>2</b>	<b>14</b>	<b>34</b>	<b>39</b>	<b>66</b>

## Crashes and injuries by municipality

Municipality	Total				Alcohol-related				Speed-related			
	Crashes		Persons		Crashes		Persons		Crashes		Persons	
	Total	Fatal	Fatality	Injury	Total	Fatal	Fatality	Injury	Total	Fatal	Fatality	Injury
Blue Lake Twp.	45	0	0	13	1	0	0	1	14	0	0	3
Casnovia	6	0	0	0	0	0	0	0	1	0	0	0
Casnovia Twp.	105	0	0	19	3	0	0	0	21	0	0	5
Cedar Creek Twp.	67	1	1	37	7	1	1	4	18	1	1	13
Dalton Twp.	262	3	3	100	15	1	1	12	82	2	2	21
Eggleston Twp.	145	0	0	63	6	0	0	4	35	0	0	12
Fruitland Twp.	101	0	0	21	6	0	0	4	28	0	0	10
Fruitport	24	0	0	18	3	0	0	7	2	0	0	1
Fruitport Twp.	280	1	1	88	19	1	1	12	81	0	0	18
Holton Twp.	71	0	0	24	6	0	0	8	14	0	0	6
Laketon Twp.	78	0	0	10	2	0	0	0	20	0	0	2
Lakewood Club	18	0	0	15	0	0	0	0	1	0	0	1
Montague	32	0	0	10	0	0	0	0	0	0	0	0
Montague Twp.	66	0	0	14	2	0	0	3	14	0	0	3
Moorland Twp.	75	1	1	8	2	0	0	1	17	1	1	6
Muskegon	1,052	3	3	259	34	2	2	18	95	1	1	14
Muskegon Heights	212	0	0	58	4	0	0	5	9	0	0	2
Muskegon Twp.	492	2	2	183	16	0	0	4	89	1	1	21
North Muskegon	72	0	0	10	1	0	0	0	10	0	0	0
Norton Shores	737	2	2	198	13	0	0	8	155	0	0	23
Ravenna	12	0	0	1	1	0	0	0	3	0	0	0
Ravenna Twp.	84	0	0	12	5	0	0	3	12	0	0	2
Roosevelt Park	30	0	0	8	0	0	0	0	0	0	0	0
Sullivan Twp.	88	0	0	24	3	0	0	1	16	0	0	4
White River Twp	19	0	0	6	0	0	0	0	3	0	0	4
Whitehall	48	0	0	14	0	0	0	0	6	0	0	2
Whitehall Twp.	88	2	3	19	6	2	3	3	14	1	1	3
Unknown Community	0	0	0	0	0	0	0	0	0	0	0	0
<b>Muskegon County TOTAL</b>	<b>4,309</b>	<b>15</b>	<b>16</b>	<b>1,232</b>	<b>155</b>	<b>7</b>	<b>8</b>	<b>98</b>	<b>760</b>	<b>7</b>	<b>7</b>	<b>176</b>

## Muskegon County continued

## Restraint use among reported vehicle occupants by municipality

Municipality	Total Occupants			Fatalities			Incapacitating			Non-incapacitating			Possible Injury			Not Injured		
	Total	Using Restraint	%	Total	Using Restraint	%	Total	Using Restraint	%	Total	Using Restraint	%	Total	Using Restraint	%	Total	Using Restraint	%
Blue Lake Twp.	58	53	91.4	0	0	0.0	1	1	100.0	4	3	75.0	8	7	87.5	43	42	97.7
Casnovia	7	5	71.4	0	0	0.0	0	0	0.0	0	0	0.0	0	0	0.0	6	5	83.3
Casnovia Twp.	135	125	92.6	0	0	0.0	0	0	0.0	9	8	88.9	9	9	100.0	113	108	95.6
Cedar Creek Twp.	94	87	92.6	1	1	100.0	2	1	50.0	13	12	92.3	21	20	95.2	56	53	94.6
Dalton Twp.	404	375	92.8	2	0	0.0	9	6	66.7	27	21	77.8	63	59	93.7	296	289	97.6
Eggleston Twp.	248	229	92.3	0	0	0.0	11	9	81.8	21	19	90.5	29	25	86.2	179	176	98.3
Fruitland Twp.	127	120	94.5	0	0	0.0	2	2	100.0	7	7	100.0	12	11	91.7	101	100	99.0
Fruitport	49	40	81.6	0	0	0.0	1	1	100.0	2	2	100.0	14	8	57.1	30	29	96.7
Fruitport Twp.	456	397	87.1	1	1	100.0	10	6	60.0	24	17	70.8	54	51	94.4	357	322	90.2
Holton Twp.	101	87	86.1	0	0	0.0	2	1	50.0	6	5	83.3	14	11	78.6	75	70	93.3
Laketon Twp.	105	98	93.3	0	0	0.0	0	0	0.0	4	4	100.0	6	3	50.0	95	91	95.8
Lakewood Club	37	31	83.8	0	0	0.0	1	1	100.0	1	1	100.0	12	9	75.0	21	20	95.2
Montague	46	46	100.0	0	0	0.0	0	0	0.0	1	1	100.0	5	5	100.0	40	40	100.0
Montague Twp.	81	79	97.5	0	0	0.0	1	1	100.0	4	4	100.0	9	9	100.0	67	65	97.0
Moorland Twp.	85	80	94.1	1	1	100.0	1	1	100.0	4	4	100.0	3	3	100.0	75	71	94.7
Muskegon	2,073	1,713	82.6	2	1	50.0	13	7	53.8	92	79	85.9	128	119	93.0	1,628	1,505	92.4
Muskegon Heights	428	331	77.3	0	0	0.0	0	0	0.0	11	7	63.6	45	38	84.4	312	277	88.8
Muskegon Twp.	942	902	95.8	2	2	100.0	13	10	76.9	44	42	95.5	118	112	94.9	748	736	98.4
North Muskegon	139	119	85.6	0	0	0.0	0	0	0.0	1	1	100.0	9	9	100.0	124	109	87.9
Norton Shores	1,336	1,244	93.1	2	1	50.0	13	6	46.2	47	44	93.6	132	128	97.0	1,104	1,065	96.5
Ravenna	16	13	81.3	0	0	0.0	1	1	100.0	0	0	0.0	0	0	0.0	14	12	85.7
Ravenna Twp.	98	88	89.8	0	0	0.0	3	1	33.3	6	3	50.0	3	2	66.7	83	82	98.8
Roosevelt Park	60	54	90.0	0	0	0.0	0	0	0.0	4	4	100.0	4	4	100.0	47	46	97.9
Sullivan Twp.	113	107	94.7	0	0	0.0	0	0	0.0	3	2	66.7	21	18	85.7	88	87	98.9
White River Twp	25	20	80.0	0	0	0.0	0	0	0.0	2	1	50.0	4	2	50.0	18	17	94.4
Whitehall	92	89	96.7	0	0	0.0	0	0	0.0	3	2	66.7	11	11	100.0	76	76	100.0
Whitehall Twp.	139	135	97.1	3	2	66.7	1	1	100.0	3	3	100.0	15	14	93.3	115	115	100.0
Unknown Community	0	0	0.0	0	0	0.0	0	0	0.0	0	0	0.0	0	0	0.0	0	0	0.0
<b>Muskegon County TOTAL</b>	<b>7,494</b>	<b>6,667</b>	<b>89.0</b>	<b>14</b>	<b>9</b>	<b>64.3</b>	<b>85</b>	<b>56</b>	<b>65.9</b>	<b>343</b>	<b>296</b>	<b>86.3</b>	<b>749</b>	<b>687</b>	<b>91.7</b>	<b>5,911</b>	<b>5,608</b>	<b>94.9</b>